

Project: **Apartment building "Moonlighting" - Geological survey**

Project ID: AA\_0014 - 2019

Annex no.: B/2

Drilling equipment: ROTAMEC

Location: Prague

Overall depth: 15,00 m

Borehole position:

Date start: 19.02.2018 Foreman: Bill New

Ground water table:

Coordinate X: 1039723,80

Date end: 19.02.2018 Documented: John Young

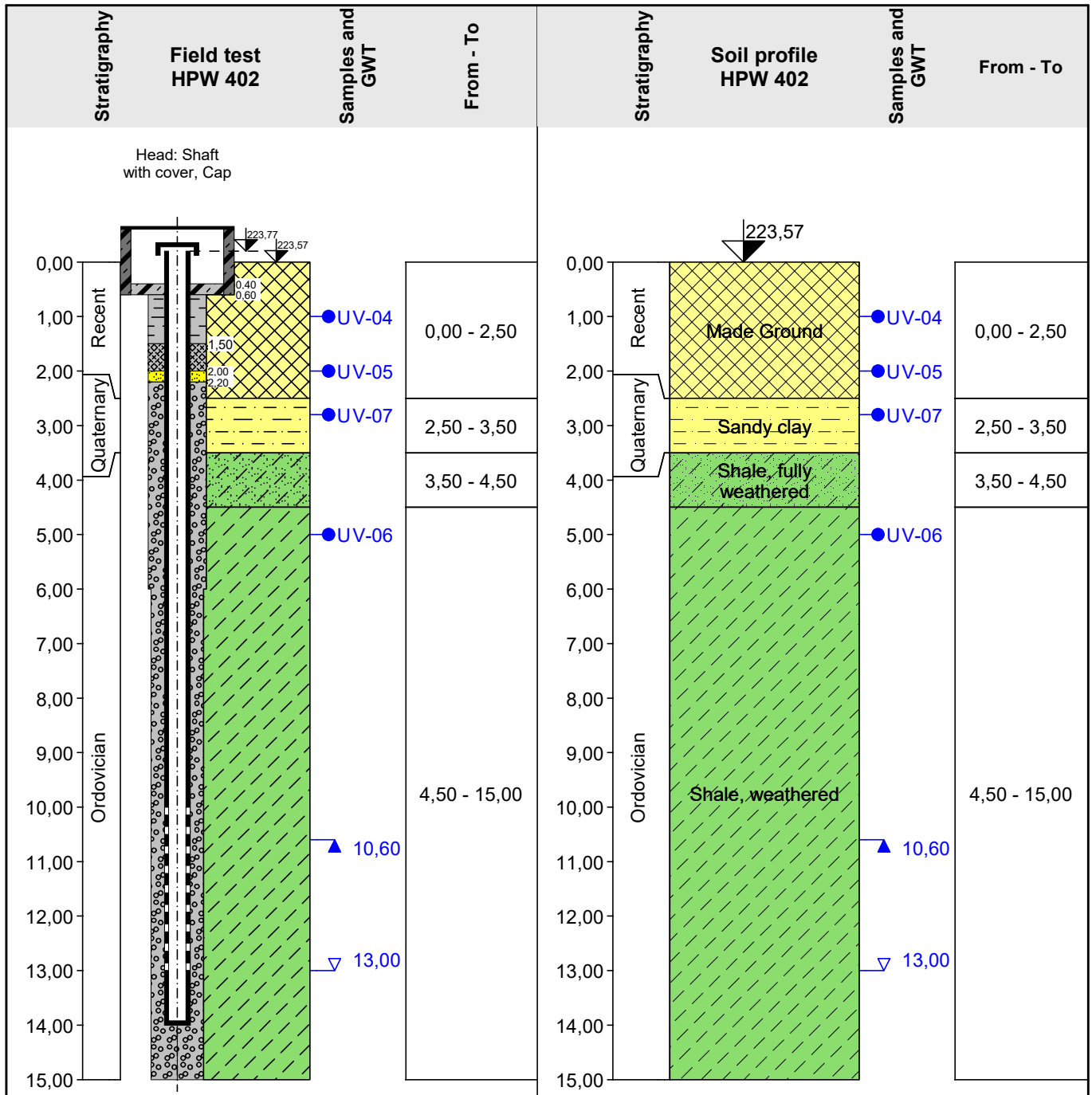
GWT bored: 13,00 m

Coordinate Y: 745181,14

Scale: one page

GWT steady: 10,60 m

Coordinate Z: 223,57 m



**Key:**

- ▼ GWT bored
- ▲ GWT steady
- U full chemical analysis